

Palacia

by



QUALITY HOME

INFRA PVT LTD.

Quality Home's
Palacio
Hyderabad



CHIRAJ KUNJ
WING - B
FIRST FLOOR
1. PLUMBERY & ELECTRICALS
2. SECOND FLOOR
3. JEWELLERY & DIAMONDS
4. THIRD FLOOR
5. FOURTH FLOOR
6. FIFTH FLOOR
7. SIXTH FLOOR
8. SEVENTH FLOOR
9. EIGHTH FLOOR
10. NINTH FLOOR



CHIRAJ KUNJ
WING - B
FIRST FLOOR
SECOND FLOOR
THIRD FLOOR
FOURTH FLOOR
FIFTH FLOOR

quality
fruit & vegetables

5%
5%

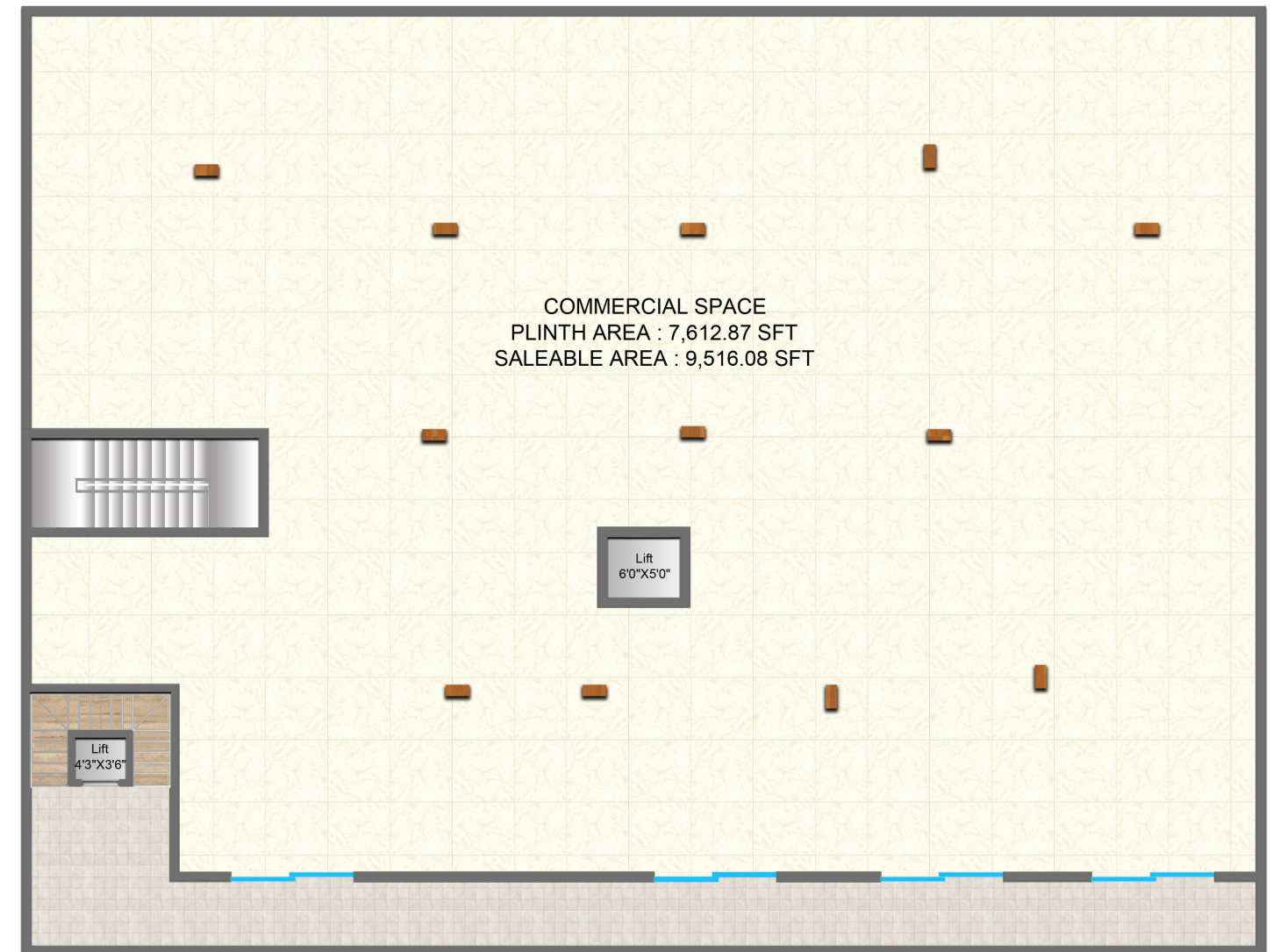


QUALITY HOME
INFRA PVT LTD.

GROUND FLOOR PLAN



FIRST FLOOR PLAN



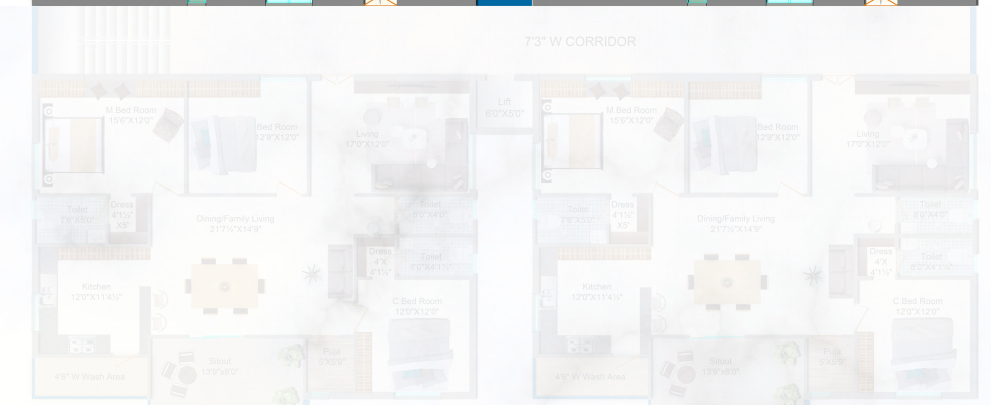


TYPICAL FLOOR PLAN



East Floor Plan

3B-3T | 2080 SFT





West Floor Plan

3B-3T | 2095 SFT



SPECIFICATIONS



PROJECT	Reinforced Cement Concrete Framed Structure, designed to with stand Wind & Seismic Loads.
FLOORING	600x600mm vitrified tiles of reputed make. Utility/Wash: Glazed ceramic tiles dado upto 4' height.
DOORS	Main door frame and shutter with good quality of teak wood only. Internal doors - Imported wood door frame and flush shutter with Veneer & melamine polish on both sides, fitted with good quality hardware and locking system of reputed make.
WINDOWS	UPVC Frames with plain glass with mosquito screen
KITCHEN	Cooking platform of Granite and Stainless steel Sink, electrical provisions for chimney, exhaust fan, and Water Purifier. 3 Nos 15 amp plug points in Kitchen.
PLASTERING	Lappam finish for inner walls and sponge finish to outer walls.
ELECTRICAL	3 Phase power supply for each individual villa. Concealed copper wiring of Finolex, or havells make. AC points for all bed rooms. Power points for cooking range, chimney, microwave, refrigerator, mixer, grinder in kitchen and Geyser point in Toilets. Modular
SWITCHES	Switches of legrand / anchor roma or equivalent make..
COLOUR	Water proof putty finish with two coats of premium emulsion paint of Asian, over a coat of primer. External Walls Texture or putty finish with two coats of exterior
TOILETS	Digital glazed ceramic wall tile dado upto 7' height of reputed make, electrical provisions for exhaust fan & geyser

ACCESSIBILITY

- 3 minutes from manikonda golden temple
- Opposite to aditya fort view villas
- 10 minutes to DPS
- 40 minutes to Shamshabad airport
- 15 minutes to IKEA, Mindspace, Hitech city



QUALITY HOME'S PALACIO IS A PROJECT OF MAGNIFICENT RESIDENTIAL APARTMENT FLATS & COMMERCIAL SPACES FOR SALE IN PUPPALAGUDA, THIS SPACE IS THE PERFECT COMBINATION OF CLASS AND CONVENIENCE.

Puppalguda is a serene suburban locale slightly away from the hustle and bustle yet well established with everything you need; Super Markets, Hospitals, Colleges, Restaurants, Community Parks and connectivity to all important locations. Devoid of air and noise pollution, Puppalguda's tranquil atmosphere is perfect for a relaxed lifestyle.

Palacio

Office: Quality Home Infra Pvt Ltd, Plot no 316, Sriram Nagar,
Road no 15, Secretariat Colony, Manikonda Municipality,
Rangareddy District - 500089

Site: Quality Home Infra Pvt Ltd, Plot no 13 & 14,
Puppalguda Village, Manikonda Municipality,
Rangareddy District - 500089